

SIGNATURE BACK TO WALL PAN WITH SPALET

American Standard

Kit Code: SIGBTWSPAÁ
AS3141-3W20411 PanÁ
AS7SS1-0100510R Seat

Recommended use

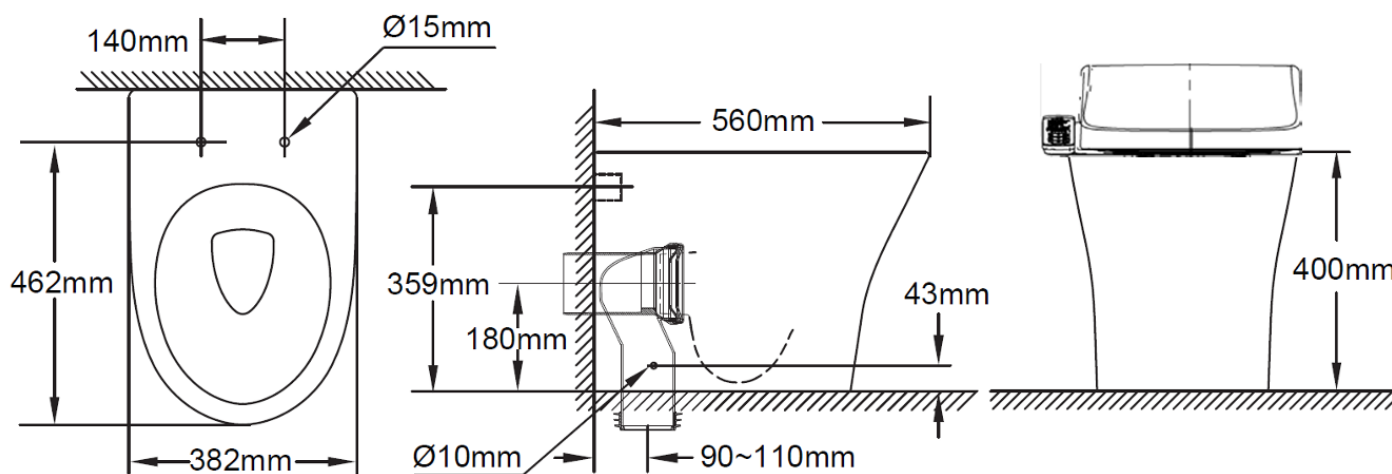
Domestic, hotel and commercial

KEY SPECIFICATIONS

- Finish: White
- Material: Pan: Vitreous China,
- Inlet valve pressure rating: 500kPa
- Outlet type: Universal S & P, P trap (converts to S trap using plastic S bend provided)
- Rim configuration: Hygiene Rim
- Technologies: Double vortex flushing, Aqua Ceramic,Á ComfortClean
- S trap set out: 90-110mm
- P trap set out: 180mm
- Toilet seat: Soft close quick release seat
- Seat functions: Adjustable seat & water temperature, adjustable dryer temperature, dual nozzle, one touch power saver

WARRANTY

- Domestic use - 10 years
- Spare parts & labour - 12 months



MONACO

Monaco Customer Call Centre: +64 9 415 6000

sales@monacocorp.co.nz

www.monacocorp.co.nz

Disclaimer: Products in this specification manual must by regulation be installed by licensed and registered trade people. The manufacturer/distributor reserves the right to vary specifications or delete models from their range without prior notification. Dimensions are nominal measurements only. Dimensions and set-outs listed are correct at time of publication however the manufacturer/distributor takes no responsibility for printing errors.
Published 11/11/24

