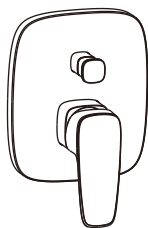


To ensure that your installation proceeds smoothly,  
please read this instructions carefully before you begin.

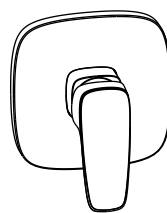
*American Standard*

## Signature

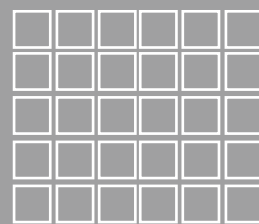
FFAS1721-609500ZN0  
SIGNATURE BATH/SOWER MIXER  
1097780000  
SIGNATURE SHOWER MIXER



FFAS1721-609500ZN0



1097780000

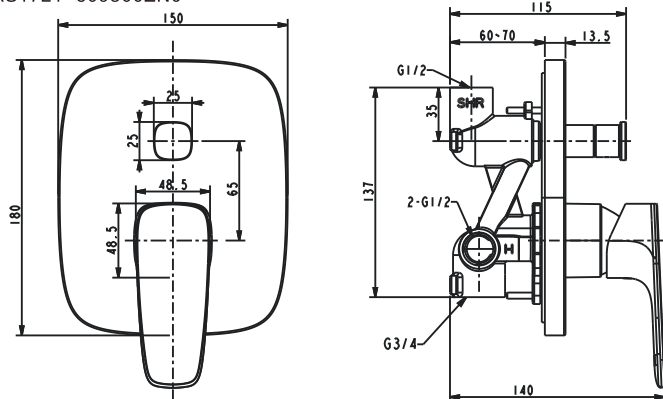


Installation &  
Operation Instruction

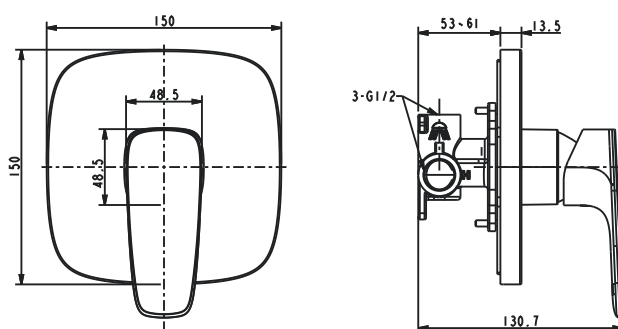
## Dimension

Unit: mm

FFAS1721-609500ZN0

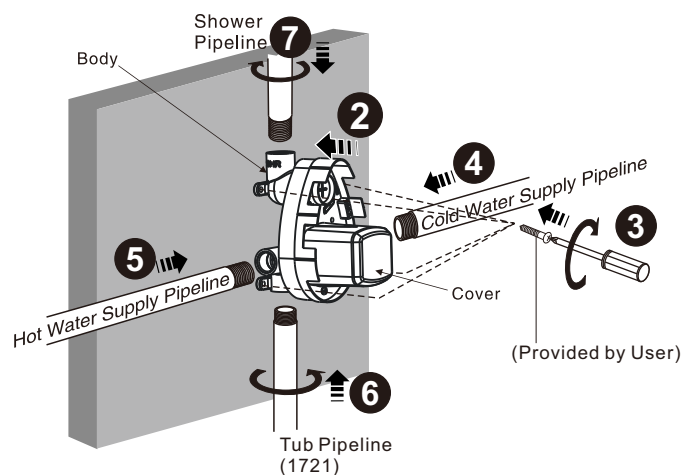
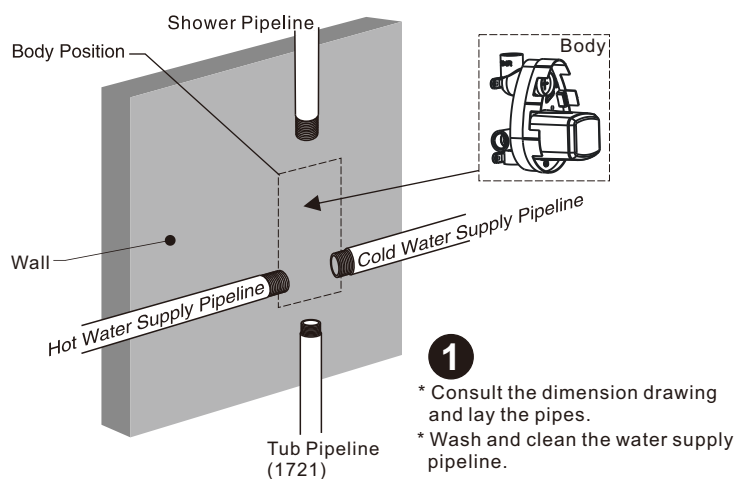


1097780000

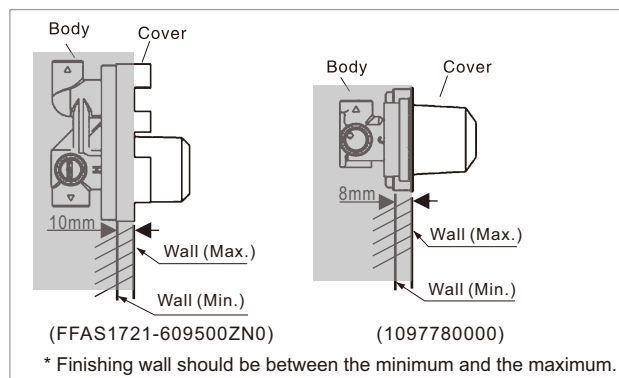
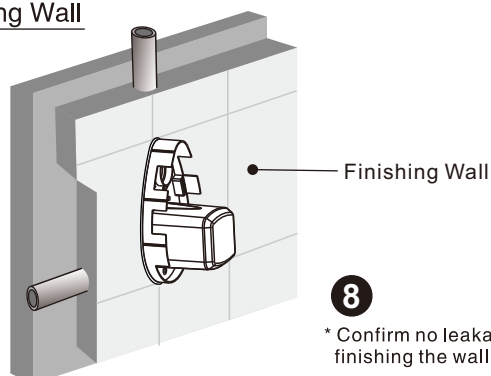


## Installation

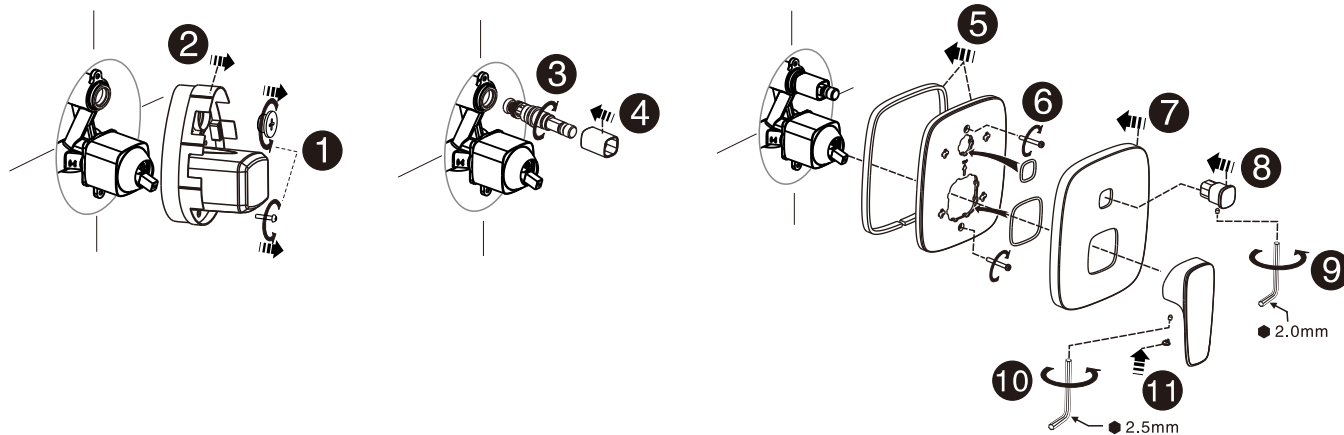
### 1 Body Installation



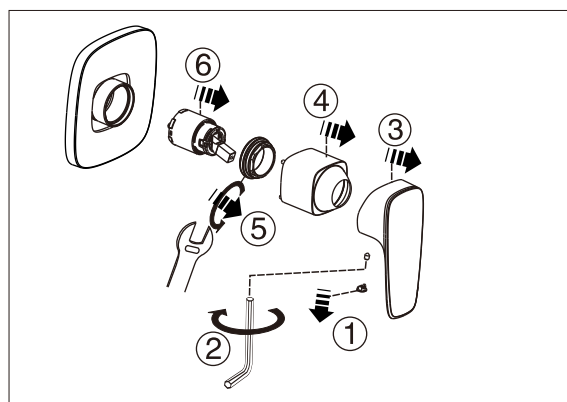
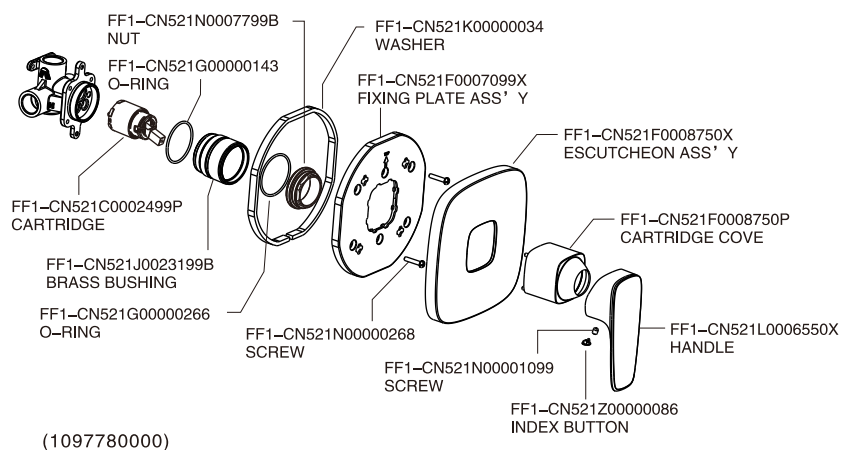
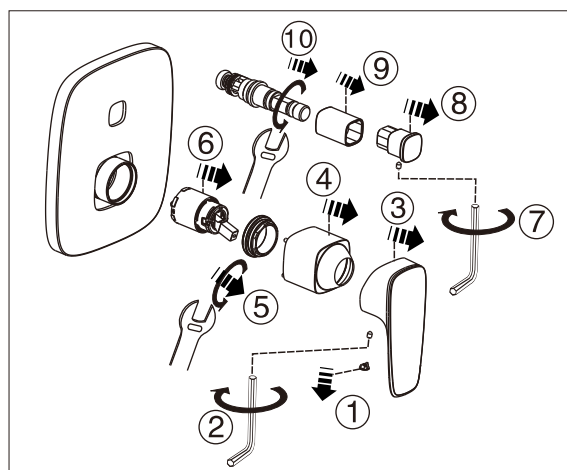
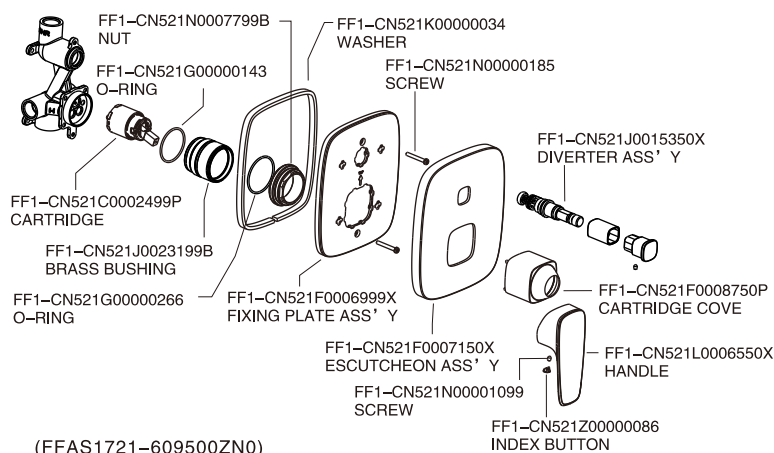
### 2 Finishing Wall



### 3 Escutcheon & Lever Installation



### Parts List



### Notice

- \* Remove all impurities in pipes before beginning to avoid clogging. Connect faucet pipes correctly.
- \* Check installation distances in the Dimension diagram to ensure correct installation.

### Conditions for use

- \* Water pressure condition: 0.05~0.75MPa (Recommended water pressure condition: 0.1~0.5MPa)  
(When exceed 0.5MPa, it is strongly advised to fit pressure limiting valve)
- \* Ambient temperature: 1~55°C
- \* Water temperature: 4°C ~ 90°C (Recommended hot water temperature 50~60°C)
- \* Steam should not be used with product.
- \* Note: Ensure water source is clean. Poor water quality can cause cartridge and internal components to clog, resulting in poor volume control and/ or product failure.