

To ensure that your installation proceeds smoothly,
please read this instructions carefully before you begin.

American Standard

Signature

FFAS1701-101500ZN0
SIGNATURE BASIN MIXER 5*

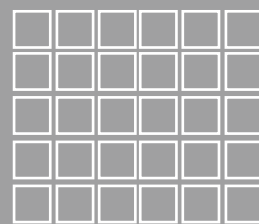
FFAS1702-101500ZN0
SIGNATURE EXTENDED BASIN MIXER 5*



FFAS1701-101500ZN0



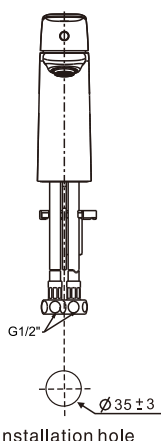
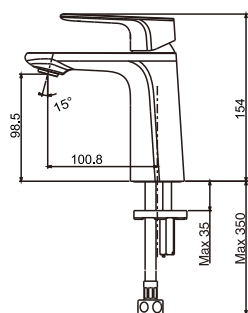
FFAS1702-101500ZN0



Installation &
Operation Instruction

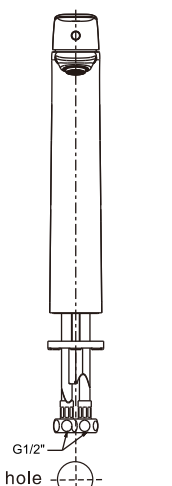
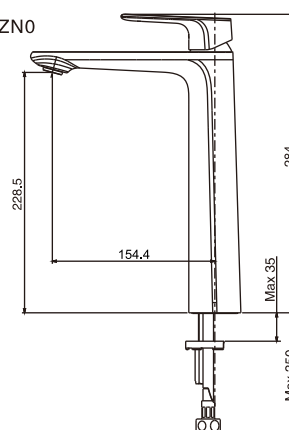
Dimension

FFAS1701-101500ZN0



Installation hole

FFAS1702-101500ZN0

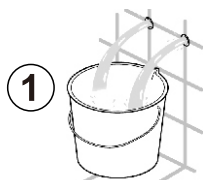


Installation hole

Unit: mm

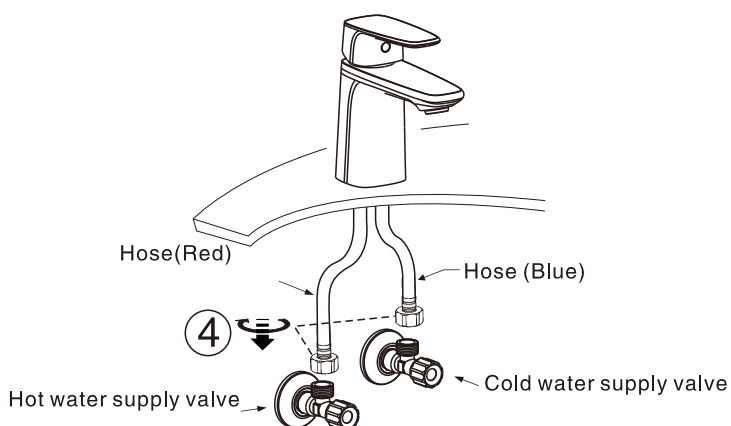
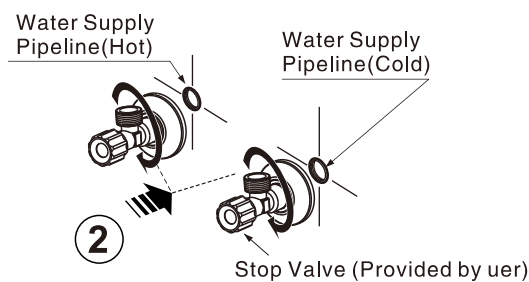
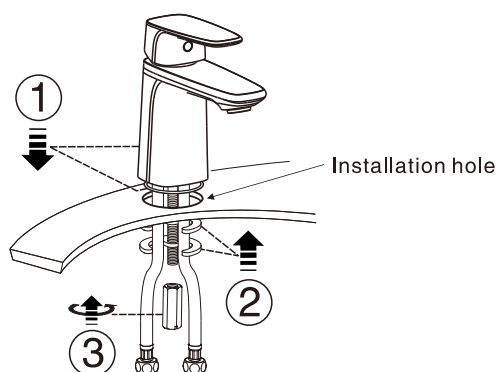
Installation

1 Preparation



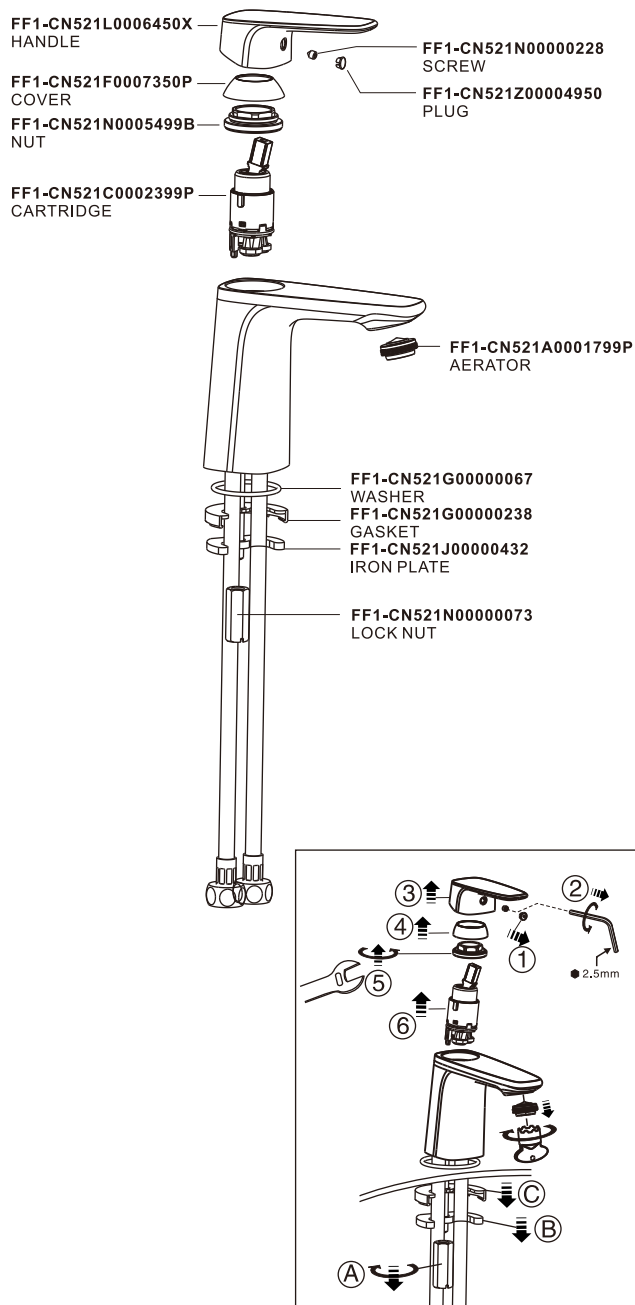
- * Consult the dimension drawing and lay the pipes.
- * Wash and clean the water supply pipeline.

2 Faucet Installation

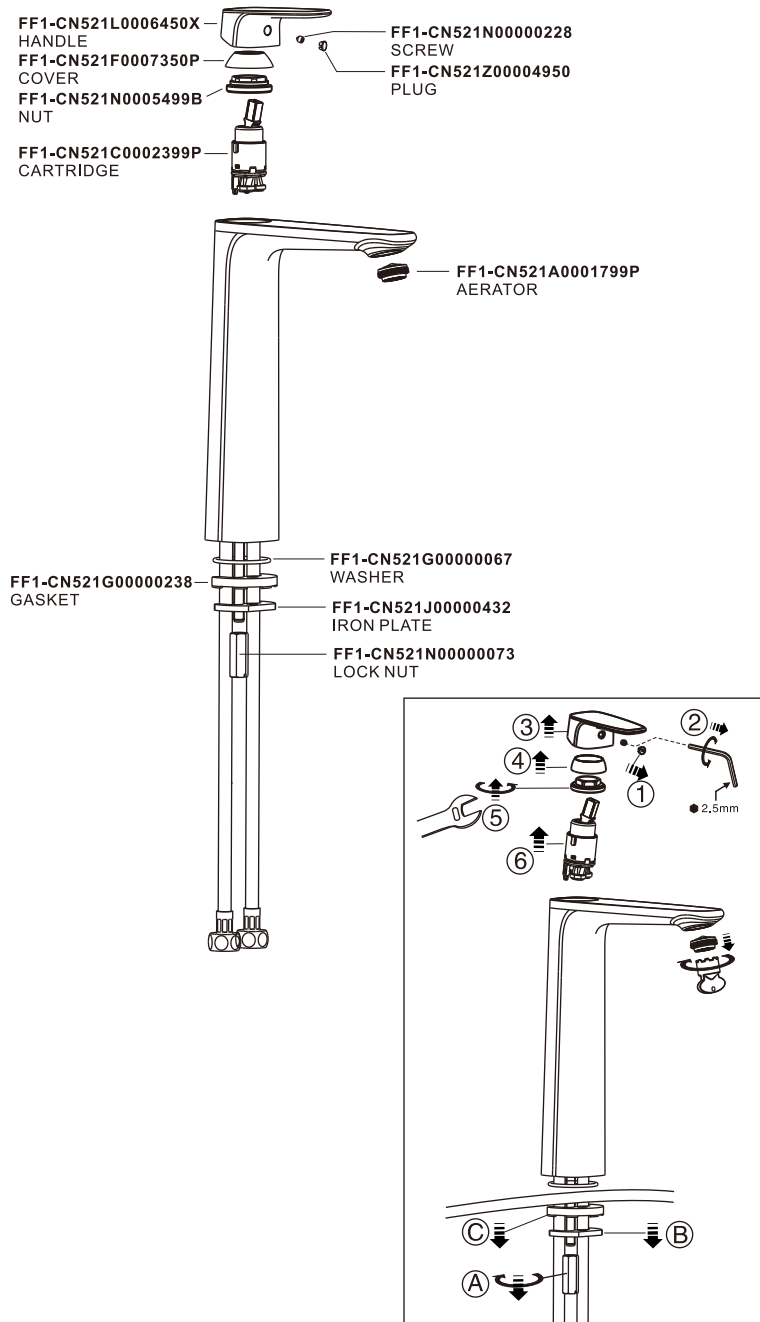


Parts List

FFAS1701-101500ZN0



FFAS1702-101500ZN0



Notice

- Mixer meets the lead free requirements of NCC vol 3
- Mixer must be installed to the requirement of AS/NZS 3500 by a qualified plumber
- Flush out new pipe work prior to connecting the new mixer
- Check installation distance in the dimension diagram to ensure correct installation

Conditions for use

- Recommended equal water pressure – 100Kpa to 500Kpa
- Maximum hot water temperature 65°C
- Flow controller must be tightened to prevent removal from hand

