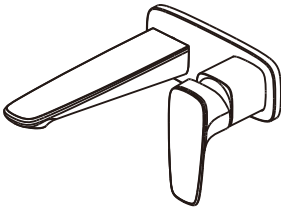


To ensure that your installation proceeds smoothly,
please read this instructions carefully before you begin.

American Standard

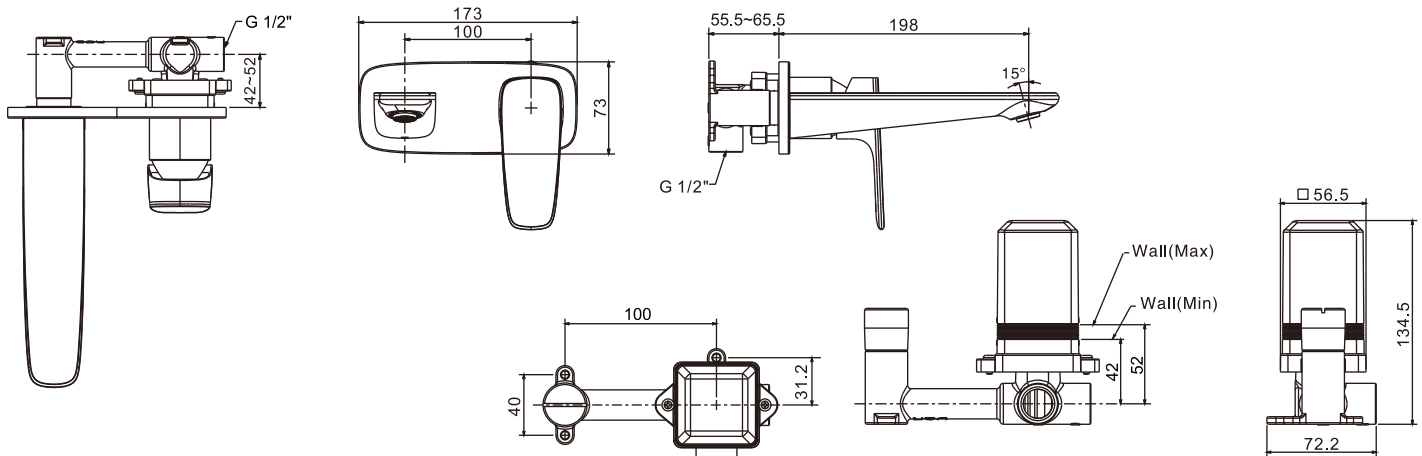
1097770000
SIGNATURE WALL BASIN/Bath MIXER SET



Installation &
Operation Instruction

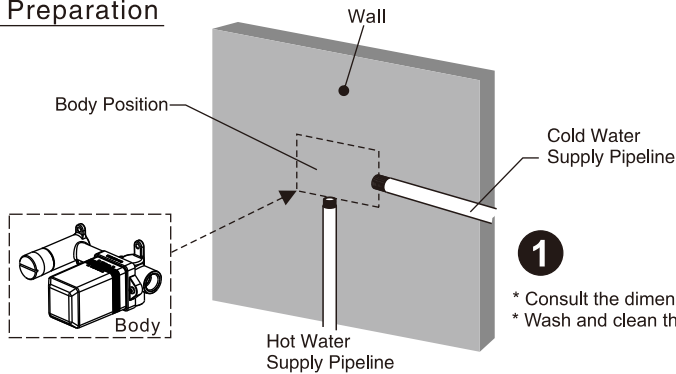
Dimension

Unit: mm



Installation

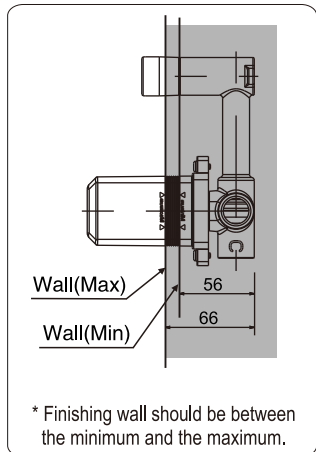
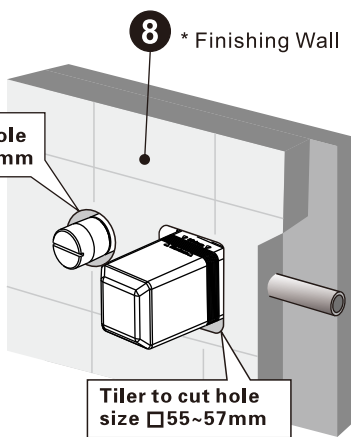
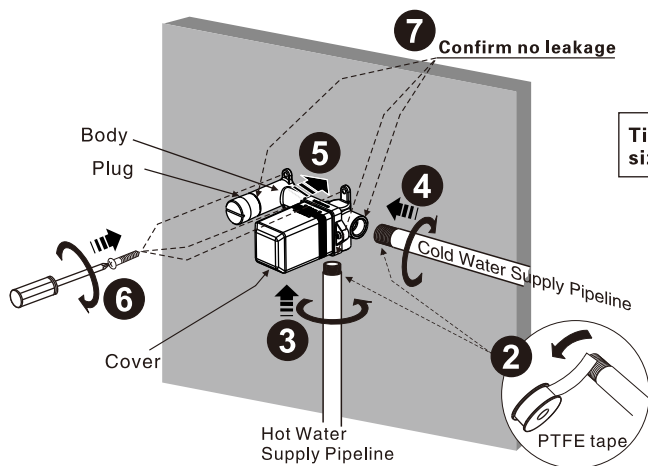
1 Preparation



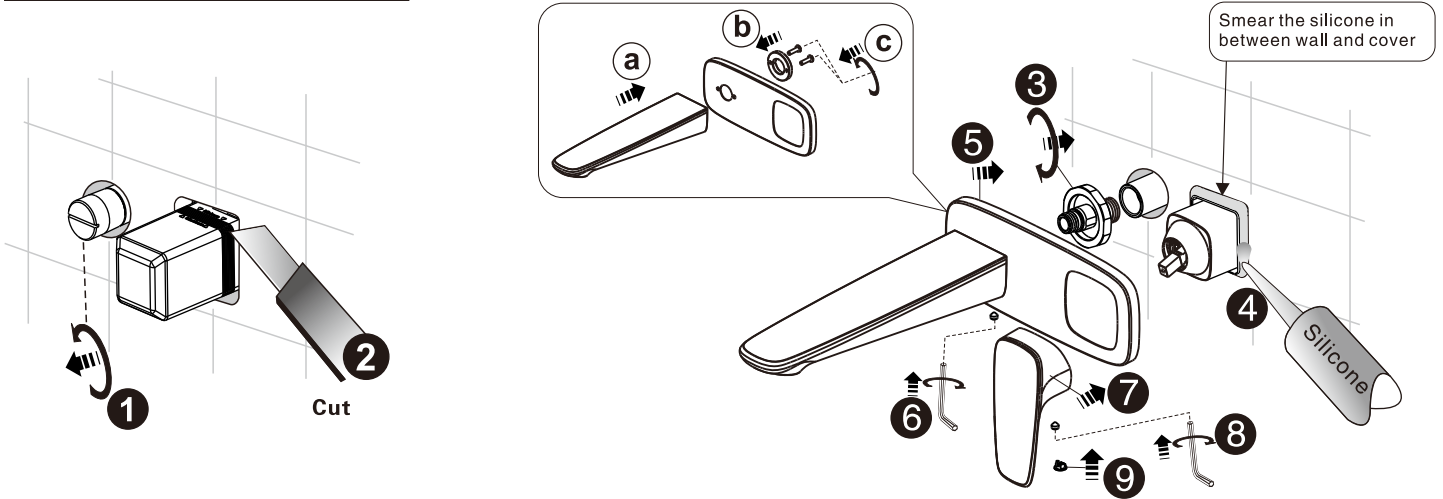
1

* Consult the dimension drawing and lay the pipes.
* Wash and clean the water supply pipeline.

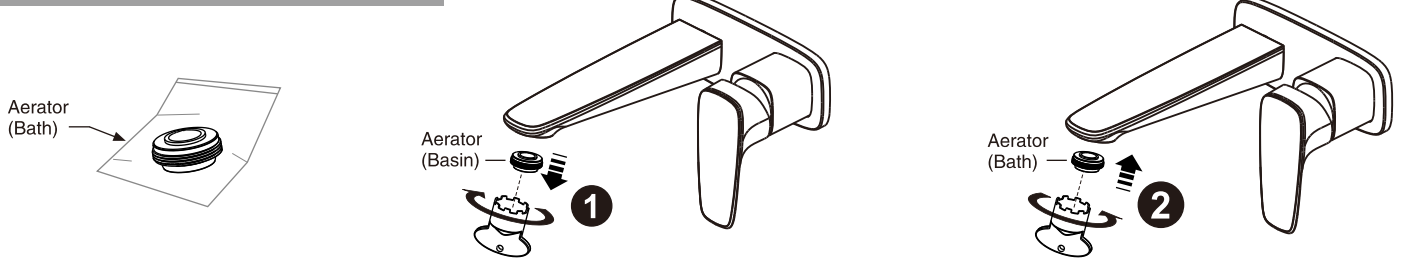
2 Body Installation



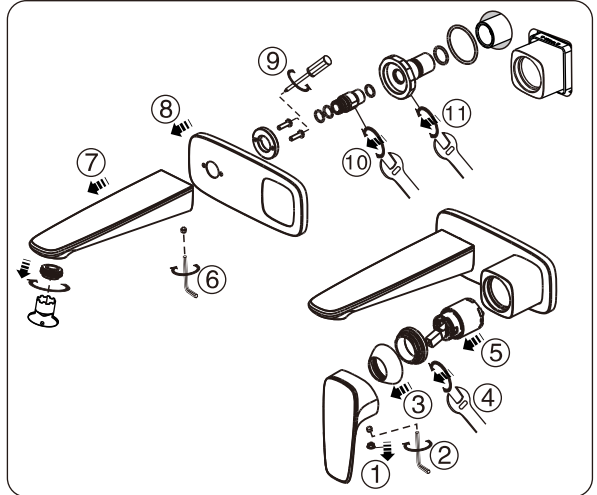
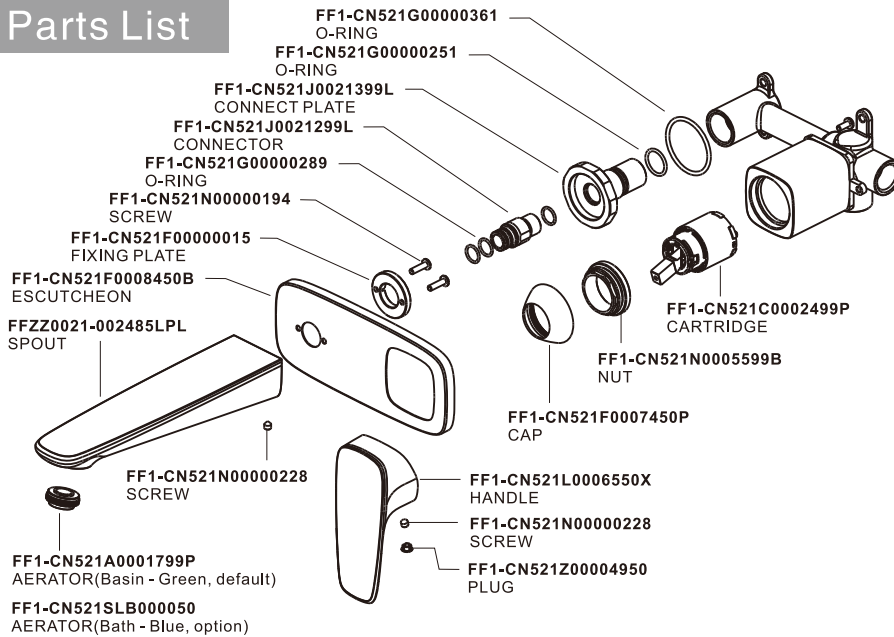
3 Spout & Handle Installation



Bath Aerator Installation



Parts List



Notice

- Mixer meets the lead free requirements of NCC vol 3
- Mixer must be installed to the requirement of AS/NZS 3500 by a qualified plumber
- Flush out new pipe work prior to connecting the new mixer
- Check installation distance in the dimension diagram to ensure correct installation

Conditions for use

- Recommended equal water pressure – 100Kpa to 500Kpa
- Maximum hot water temperature 65°C
- Flow controller must be tightened to prevent removal from hand

