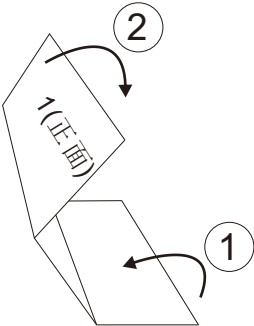


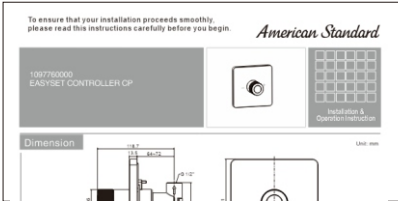
Tolerance, Unless Otherwise Stated. Is		
Above 0.5 to and including 6	±0.1	
Excess 6 to and including 30	±0.2	
Excess 30 to and including 120	±0.3	
Excess 120 to and including 315	±0.5	
Excess 315 to and including 1000	±0.8	
Excess 1000 to and including 2000	±1.2	



1. 说明书双面印刷完成
(210x297=A4) 共2张



2. 说明书折叠



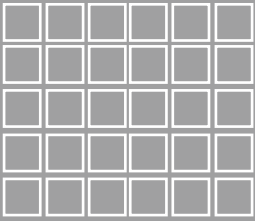
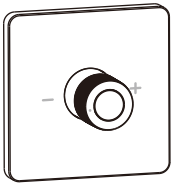
3. 说明书折叠完成

制作说明：

- 1. 说明书完成的尺寸：210*100
- 2. 材料：80克的白色纸
- 3. 印刷说明：说明书为210x297(A4) 双面印刷，并折叠成210x100大小完成(详看图示)
- 4. 印刷颜色：灰度
- 5. 印刷时，内容准确，清晰，墨色均匀，表面清洁。

				DESIGN	黄卓桓	2024.08.06	TITLE Instructions	
				CHECKED	付志	2024.08.23	REF 澳洲英文说明书 1097760000	
				APPROVED	李程	2024.8.23		
				SCALE	MATERIAL	WEIGHT	DWG NO. FF1-CN521K00676799	American Standard
REV	DESCRIPTION	DATE	NAME					

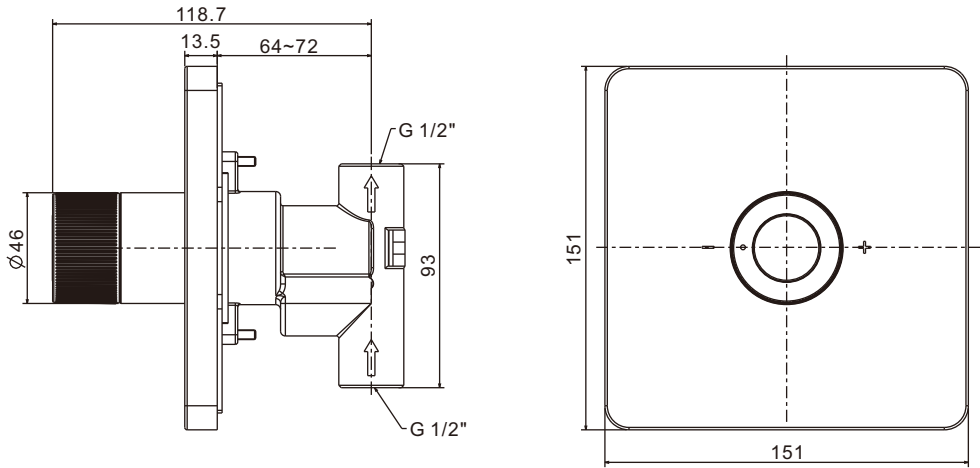
1097760000
EASYSET CONTROLLER CP



Installation &
Operation Instruction

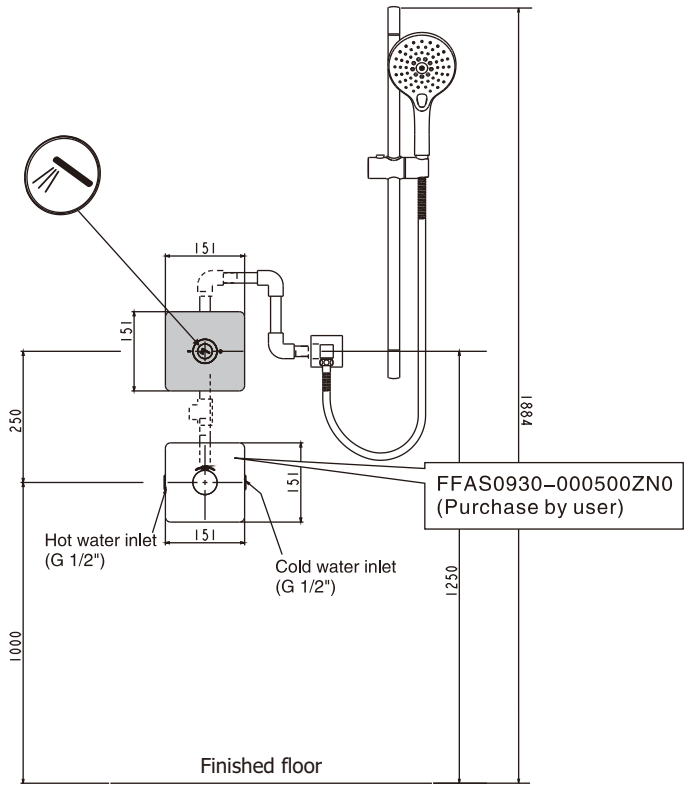
Dimension

Unit: mm



The combination of the recommended installation drawing

Combination 1



Pipeline (Provided by user)

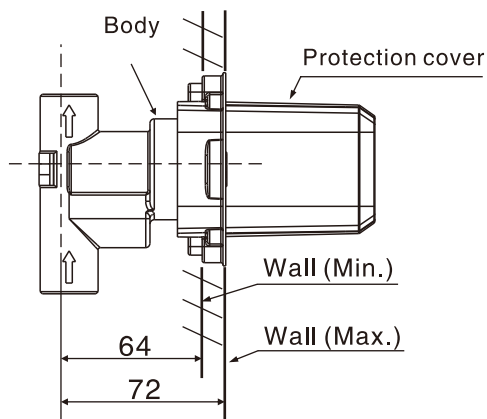
1097760000x1

Technical drawing of the FFAS0930-000500ZNO shower unit. The drawing shows the unit's dimensions and components. The total height is 2000 mm. The unit is divided into three sections, each 250 mm high. The bottom section is 1000 mm high. The unit is mounted on a finished floor. The unit includes a hot water inlet (G 1/2"), a cold water inlet (G 1/2"), and a shower head. The unit is labeled with the model number FFAS0930-000500ZNO and the note (Purchase by user). The unit is also labeled with the dimensions 151 mm and 1250 mm.

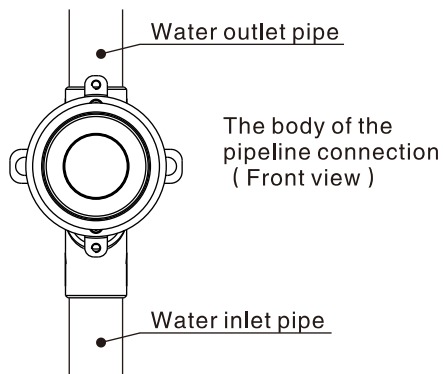
Technical drawing of the FFAS054-000500ZN0 shower unit. The drawing shows the unit's profile and top view. Key dimensions include a total height of 1558mm, a base height of 958mm, and a width of 1250mm. The unit features a hot water inlet (G 1/2") and a cold water inlet (G 1/2"). The top view shows three showerheads with a diameter of 151mm and a spacing of 250mm between them. The unit is mounted on a finished floor. Callouts indicate that the FFAS054-000500ZN0 unit and the FFAS0930-000500ZN0 showerhead are purchased by the user. The drawing also shows the unit's connection to the water supply and the showerhead's spray pattern.

Installation

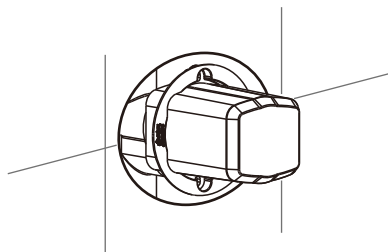
1 Body Installation



- 1 Determine the installation position and lay the water supply pipeline reference to installation drawing.

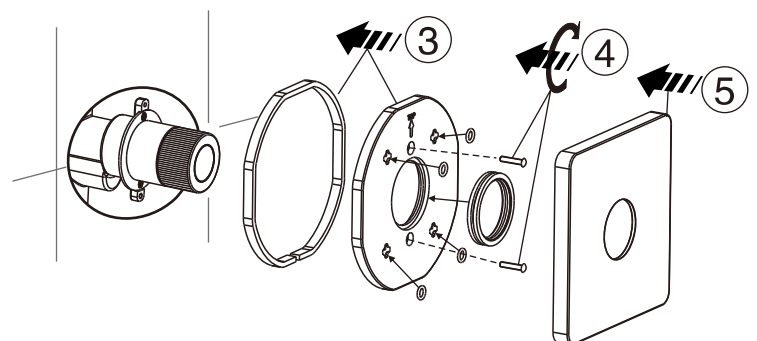
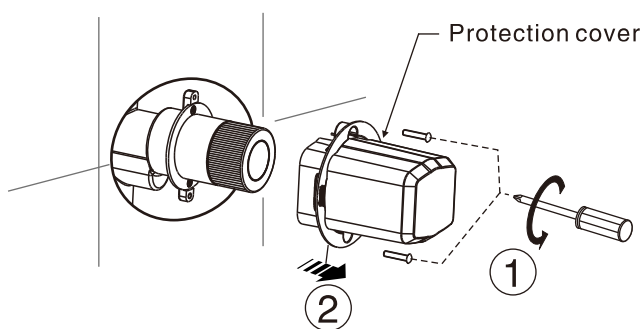


- 2 Connecting the pipeline.
Before the installation, Wash and clean the water supply pipeline.



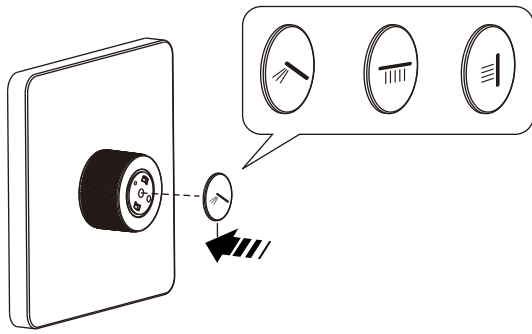
- 3 Confirm no leakage. Finished the wall.

2 Escutcheon & Handle Installation

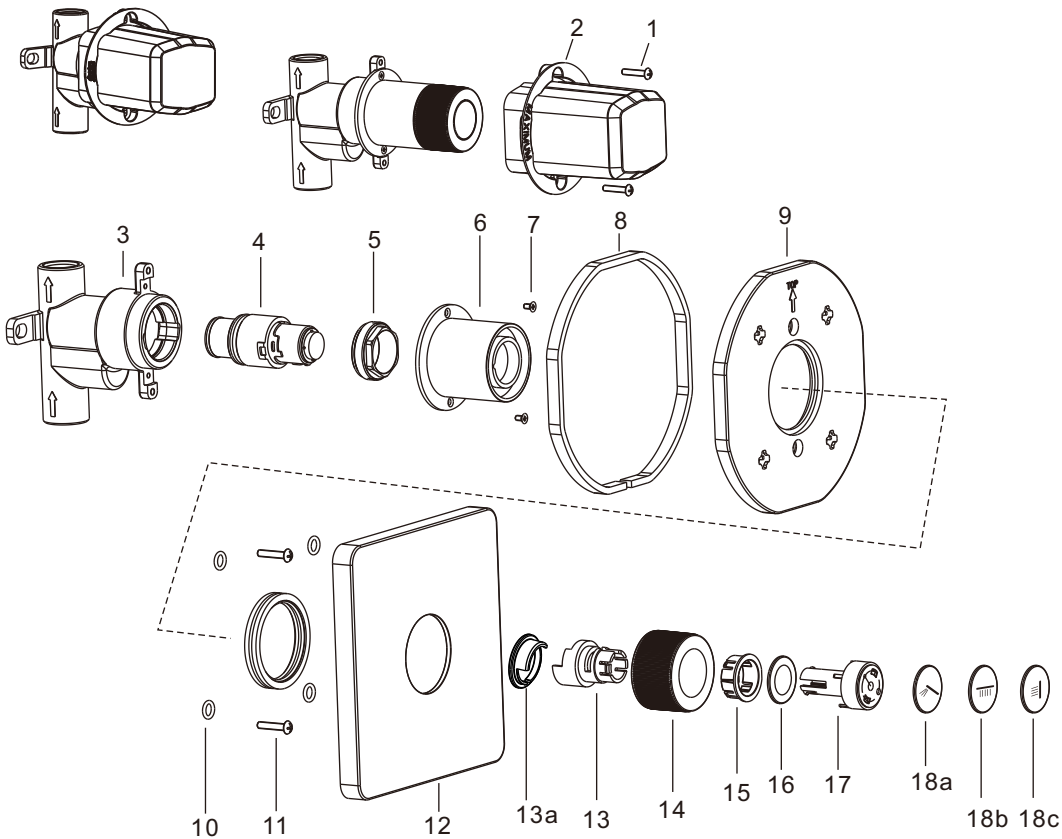


Installation

3 Button cover Installation



Parts List



No.	Part Name	Q'ty
1	Screw	2
2	Protection cover	1
3	Body	1
4	Cartridge	1
5	Lock nut	1
6	Bushing	1
7	Screw	2
8	Washer	1
9	Fixing plate	1
10	O-Ring	4
11	Screw	2
12	Escutcheon	1
13	Handle adapter	1
13a	Stop ring	1
14	Handle	1
15	Bushing	1
16	Washer	1
17	Button body	1
18a	Button cover (hand shower)	1
18b	Button cover (top shower)	1
18c	Button cover (body shower)	1

Notice

- * All instruction procedures must strictly comply with local plumbing and building codes regulations.
- * Remove all impurity in pipes before beginning to avoid clogging. Connect faucet pipes correctly.
- * Check installation distances in the Dimension diagram to ensure correct installation.

Conditions for use

- * Recommended water pressure condition: (Dynamic Pressure) : 0.1Mpa–0.5Mpa (When exceed 0.5MPa, it is strongly advised to add pressure reducing valve)
- * Environment Temperature: 1~55℃
- * Water temperature: 4℃ ~ 90℃
- * Steam is not allowed to use.