

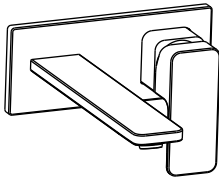
To ensure that your installation proceeds smoothly,  
please read this instructions carefully before you begin.

*American Standard*

# CYGNET

1097750000

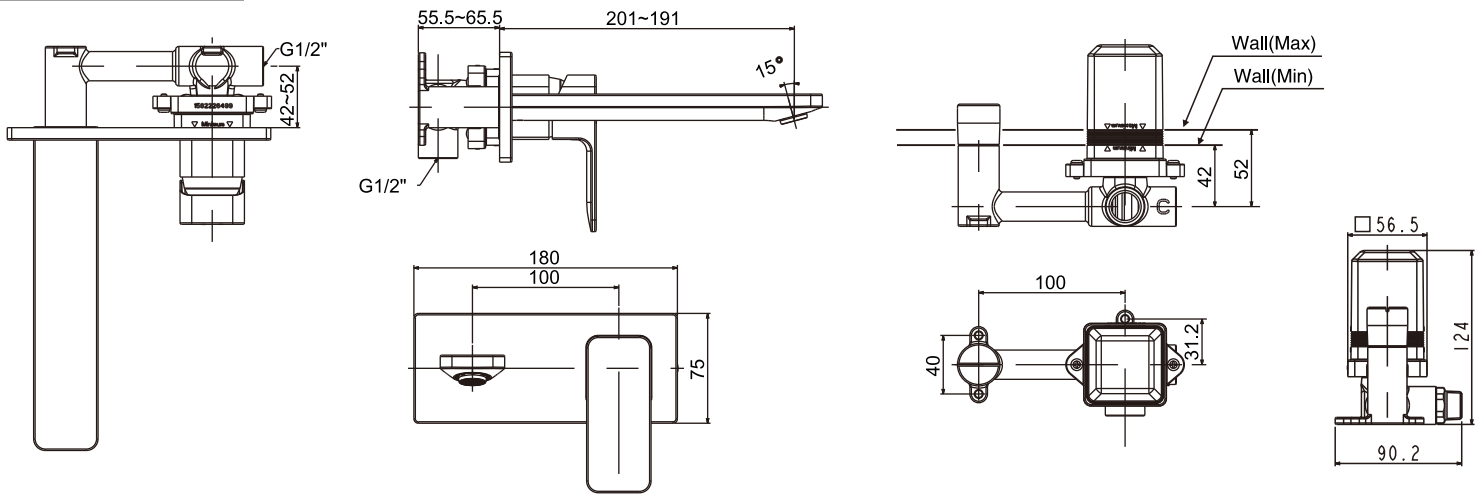
CYGNET WALL Basin/Bath MIX SET CP



Installation &  
Operation Instruction

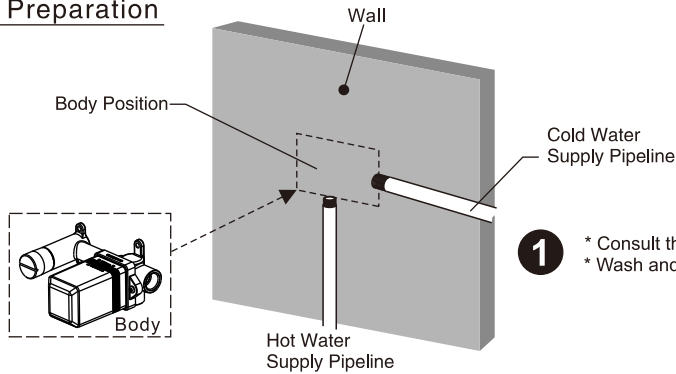
## Dimension

Unit: mm



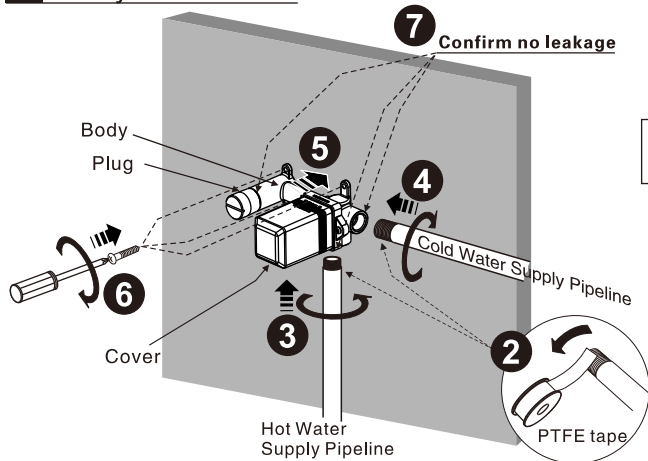
## Installation

### 1 Preparation

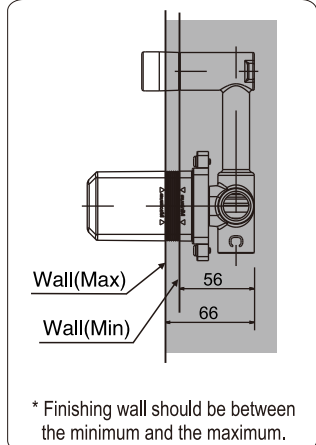
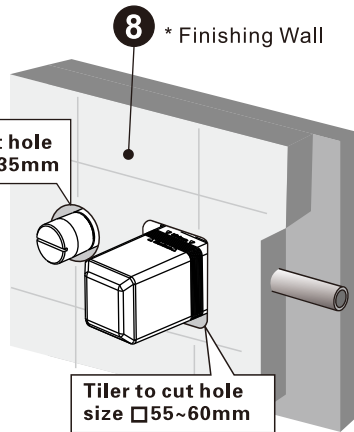


- 1 \* Consult the dimension drawing and lay the pipes.
- \* Wash and clean the water supply pipeline.

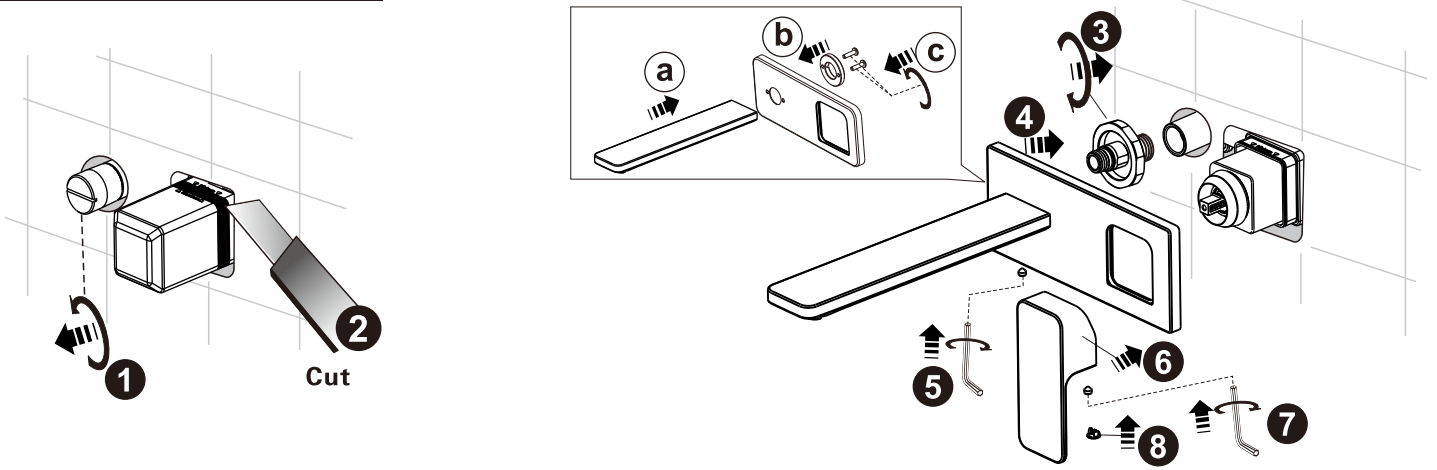
### 2 Body Installation



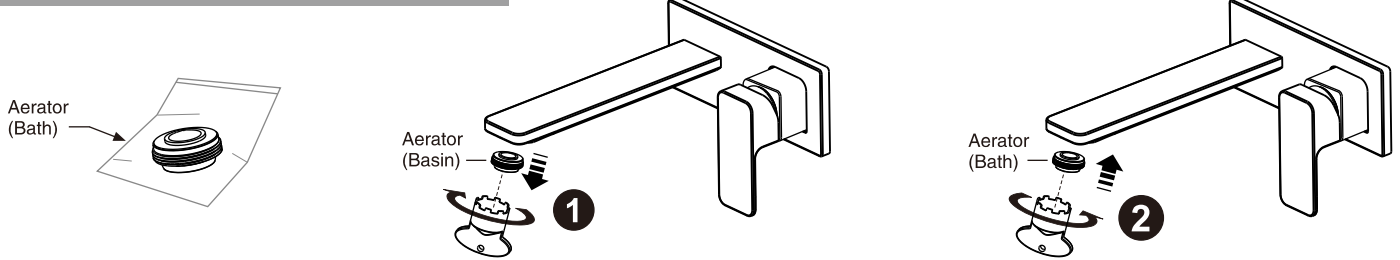
Tiler to cut hole  
size  $\varnothing 30\sim 35\text{mm}$



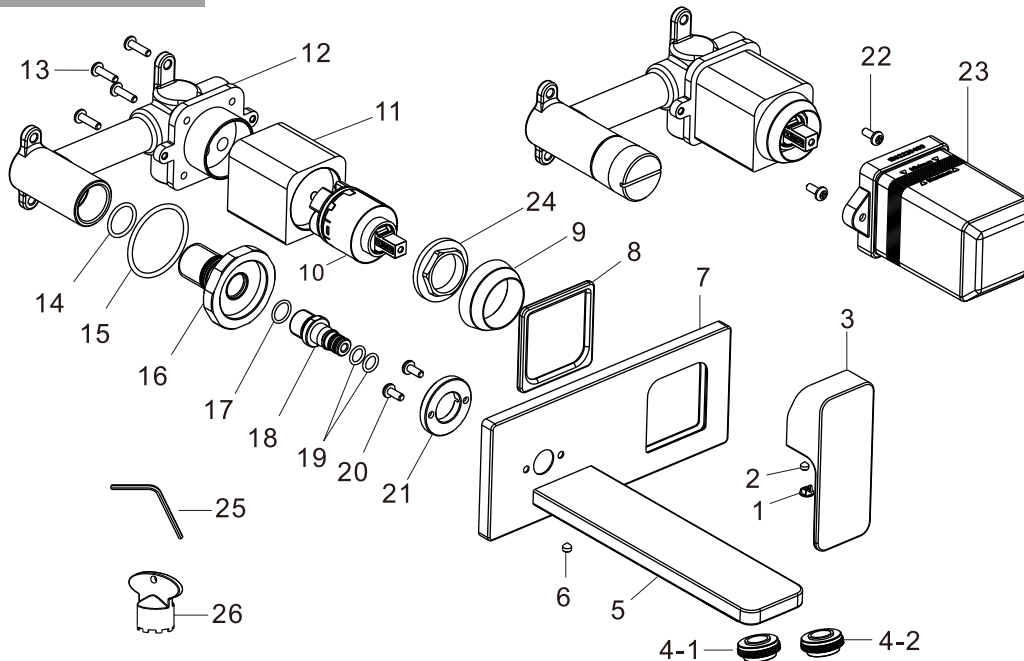
### 3 Spout & Handle Installation



### Installation the Bath Aerator



### Parts List



No.	Part Name	Q'ty
1	Index Button	1
2	Screw	1
3	Handle	1
4-1	Aerator (Basin- Lilac,default)	1
4-2	Aerator (Bath - Blue,option)	1
5	Spout	1
6	Screw	1
7	Escutcheon	1
8	Washer	1
9	Cap	1
10	Cartridge	1
11	Bushing	1
12	Body	1
13	Screw	4
14	O-Ring	1
15	O-Ring	1
16	Connector	1
17	O-Ring	1
18	Connector	1
19	O-Ring	2
20	Screw	2
21	Fixing plate	1
22	Screw	1
23	Cover	1
24	Nut	1
25	In-hex Wrench	1
26	Aerator Wrench	1

### Notice

- Mixer meets the lead free requirements of NCC vol 3
- Mixer must be installed to the requirement of AS/NZS 3500 by a qualified plumber
- Flush out new pipe work prior to connecting the new mixer
- Check installation distance in the dimension diagram to ensure correct installation

### Conditions for use

- Recommended equal water pressure – 100Kpa to 500Kpa
- Maximum hot water temperature 65°C
- Flow controller must be tightened to prevent removal from hand

